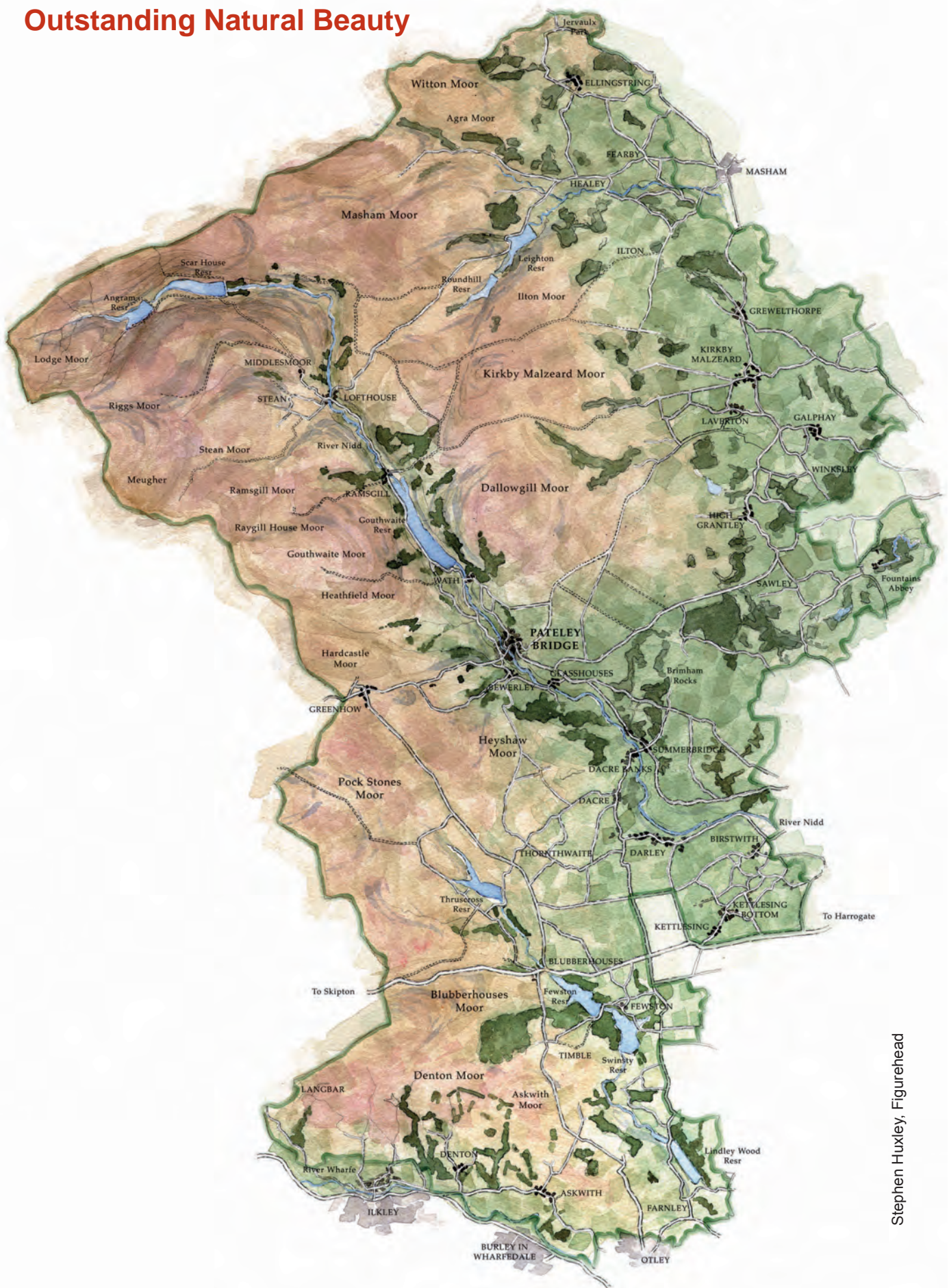




Nidderdale Area of Outstanding Natural Beauty



Stephen Huxley, Figurehead

contents

AONB Map	(inside front cover)
2008-2009 at a glance	
Preface	1
PART 1 - Setting the Scene	3
AONB Designation	3
AONB Special Qualities.....	3
Ecosystem services.....	4
The AONB's Joint Advisory Committee	4
AONB Team	5
PART 2 - Performance	6
Policy	6
People & Partnerships	6
Conserving Natural Beauty.....	8
PART 3 - Financial Summary	11

What we did in 2008/09 - at a glance

Here is a snapshot of our activities. In 2008/9 we:

- Assembled a £48,500 funding package, including a grant from the Aggregate Levy Sustainability Fund, to produce management plans for Sites of Importance for Nature Conservation in the AONB.
- Won grants worth £18,000, including an award from the Landfill Communities Fund, for a biodiversity project on the river Washburn.
- Organised the 2008 season AONB wader population survey of 58 km² of land involving 52 volunteer days.
- Played a leading role in the development of the bid for Leader funding for the Yorkshire Dales that resulted in the award of £2.75 million of grant aid to support investment in the environment, economy and rural communities of the Dales.
- Maintained AONB support for the Friends of Nidderdale AONB, and for their programme of activities including the Enterprising Farm Award scheme organised jointly with Nidderdale Agricultural Society.
- Provided a free conservation advice service for AONB farmers, and entered 5,169ha of land into ELS during 2008/9 resulting in grants for AONB farmers worth £75,450. 10 HLS agreements were submitted by the AONB Farm Conservation Officer who carried out 124 visits to AONB farmers during the year.
- Carried out 33 farm visits and distributed £20,000 of grant aid to support implementation of on-farm flood risk reduction plans by farmers in the Ripon Multi Objective Project area. The project also facilitated 8 Environmental Stewardship agreements and negotiated 3-year grant funding agreement with the Environment Agency for Phase 3 of the Project.
- Helped Hanson Aggregates distribute grants to support conservation work by administering the Greenhow Landscape & Biodiversity Grant Scheme.
- Published the results of research into future prospects for the farming industry in the Yorkshire Dales commissioned jointly with the Yorkshire Dales National Park.
- Provided 11 Parish Councils with grants to support Parish Caretakers.
- Distributed over £50,000 of grant-aid to support sustainable development in the AONB including a public transport networks for visitors and a farm-based tourism project.
- Invested £16,890 in repairing historic buildings in the AONB.
- Organised a summer events programme consisting of 46 walks, talks and events for local people and visitors to the AONB.
- Published and distributed 30,000 copies of the summer 2008 Visit Nidderdale AONB newsletter
- Produced an AONB Historic Environment Strategy following consultation with stakeholders and the community.
- Published and distributed 28,000 copies of the AONB residents newsletter to every household in the AONB.
- Created opportunities for volunteers that resulted in more than 3,250 volunteer hours of work in support of AONB objectives.
- Approved 12 plans for new native woodland planting using funds provided by the SITA Trust, and created two areas of woodland using funding supplied by the Harrogate Rotarians.
- Represented AONB interests in consultations on rural matters initiated by national and regional Government, and local planning authorities.
- Produced a new statutory AONB Management Plan covering the period from April 2009 to March 2014 following consultation with stakeholders and the community.
- Issued a report prepared by North Yorkshire County Council containing a Strategic Environmental Assessment, and an Appropriate Assessment, of policies in the Management Plan.
- Researched, collated and analysed data on the condition of the AONB's landscape, natural and historic environments, recreation infrastructure, the economy and community life, and published the results in the Management Plan Evidence Base report.



The Joint Advisory Committee' goal, which was set out in the April 2004 - March 2009 Management Plan, is to ensure that:

- stewardship of natural beauty is a priority for everyone
- tranquility and opportunities for quiet enjoyment of nature are protected
- biodiversity is valued for its own sake
- the legacy of the historic environment is celebrated
- local distinctiveness is maintained
- the livelihoods of local communities are protected

The purpose of this Annual Review is to record progress made by the Joint Advisory Committee, the Committee's partners including farmers, community groups, local authorities and government agencies, and the AONB Officer Team.

It contains a summary of work carried out in accordance with priorities set out in the AONB Management Plan that covered the period to March 2009. Detailed targets that underpinned this work

were identified in the annual Service Delivery Plan that was approved by the JAC in April 2008. The Committee received a detailed report on progress towards meeting these targets in April 2009.

Strategic Environmental Assessment Monitoring

The European Directive 2001/42/EC "on the assessment of the effects of certain plans and programmes on the environment" (the SEA Directive) requires member states to ensure that Strategic Environmental Assessments are carried out for those plans, including AONB Management Plans, that are covered by the Directive. The Directive was implemented in England through the Environmental Assessment of Plans and Programmes Regulations 2004.

Monitoring and Reporting

The SEA requires that monitoring of the AONB Management Plan 2009 - 2014 is undertaken. Objectives and indicators (Table 1, overleaf) were established which reflected the key environmental issues outlined in the plan. Table 1 shows the baseline for 2008/09 that will be updated annually.

Indicators		Baseline 2008/2009	Data Collected/ Held by
To protect and enhance the AONB landscape			
1.	Amount of land covered by agri-environment scheme agreements: Entry Level Entry Level Plus Higher Organic Entry Level Organic Plus Higher Level	153.8 km ² 4.459 km ² 1.076 km ² 1.212 km ²	NE/NYCC/AONB
2.	Amount of land covered by: EWGS Felling Licence Agreements	21 Baseline data is being collated	HBC
3.	Number of planning applications refused based on ground of harm to AONB landscape	Baseline data is being collated	HBC
To protect and enhance the natural environment			
4.	Amount of land designated SSSI in: Favourable Unfavourable Recovering	19 71	NE
5.	Number of SINC's in active management	1	NYCC
6.	Number of sites designated as Regionally Important Geological and Geomorphological Sites	0	NE/AONB
7.	Population of wading birds (Snipe, Curlew, Lapwing, Redshank)	Baseline data will be available from 2010	AONB
To protect, maintain and promote heritage and the historic environment			
8.	Number of heritage sites at high/medium/low risk in AONB: Listed Buildings Scheduled Monuments	570 (5 on At Risk Register) 145	EH/NYCC
9.	Number of monuments records enhanced to confirm HER national benchmark Level 1	2,355 records of which 1,609 are enhanced to benchmark Level (68%)	EH/NYCC
10.	Number of annual heritage events in the AONB	8	AONB
To promote understanding and enjoyment of the AONB			
11.	Number of Public Rights of Way network maintenance tasks outstanding	2,478 maintenance tasks outstanding	NYCC
12.	Number of people attending AONB events	200	AONB
To promote and protect social and environmental qualities for those living and working in the AONB			
13.	Number of affordable housing units built	Baseline data is being collated	HBC
14.	Number of local services: Post Offices Local shops Pubs	7 (1 of which is mobile) Baseline data is being collated 40	HBC/NYCC
15.	Total level of economic activity	8,395 ¹	NYCC /HBC/AONB
16.	Number of business start ups	Baseline data is being collated	HBC/AONB/NYCC
17.	Number of people employed in agriculture	1,355 ²	DEFRA/AONB
18.	Visitor Numbers: Day Staying	375,000 (2006) 134,000 (2006)	AONB
19.	Number of accredited accommodation providers	42	AONB
20.	Number of accredited green tourism businesses	1	AONB

1. Source: 2001 Census of Population (NOMIS), ONS

2. Hill Farming Systems in Nidderdale AONB & the Yorkshire Dales National Park (Andersons 2009)



AONB Designation

The primary purpose of AONB designation is to conserve and enhance natural beauty - its flora, fauna and geological or physiographical features.

The Government's policy for AONB's states that 'In pursuing the primary purpose account should be taken of the needs of agriculture, forestry, other rural industries and of the economic and social needs of local communities. Particular regard should be paid to promoting sustainable forms of social and economic development that in themselves conserve and enhance the environment.'

At sub-regional level, local authorities (North Yorkshire County, alongside Harrogate, Richmondshire and Hambleton District Councils) are the accountable bodies for the Nidderdale AONB. Natural England, the Government's advisor on wildlife and the countryside, provides both funding for the AONB's work, and operates in partnership with the local authority accountable bodies to meet the Government's objectives for AONBs.

AONB Special Qualities

Landscape character is a distinct, recognisable and consistent pattern of elements in the landscape that makes one landscape different from another, rather than better or worse. It gives rise to a 'sense of place' that defines people's understanding and appreciation of these elements in the landscape. Protected landscapes like AONBs are designated because they possess special landscape qualities that generations have come to value, and which therefore warrant exceptional safeguards.

The Special Qualities of the Nidderdale AONB include:

- Contrasting scenery with dramatic views across remote moorlands to distant horizons together with sheltered valleys and rolling farmland
- Sandstone tors like those at Brimham together with steep crags that mark the edge of many river valleys in the AONB
- Internationally important wildlife habitats characterized by birds such as red grouse, golden plover and merlin
- A rich and diverse historic environment including a World Heritage Site at Fountains Abbey, over a hundred sites contained in the Historic Environment Record and more than five hundred listed buildings
- Extensive woodland including commercial plantations and ancient broadleaved woods with a network of species-rich hedgerows on the eastern edge of the designated area
- Wetlands ranging from the eleven reservoirs with their associated dams, weirs and sluices to the three river catchments plus numerous lakes and water features associated with the numerous AONBs designed landscapes
- An extensive network of public rights of way incorporating access for people of all abilities and regional walking trails such as the Nidderdale Way and the 'Ripon Rowel'
- Over 323 km² of open access land where walkers can explore the AONB on foot

Ecosystem services

AONB designation in its own right remains a priority for Natural England, but following DEFRA's lead, there is a recognition that protected landscapes like AONBs and National Parks fulfill a variety of purposes. The publication by DEFRA during 2007 of two key policy documents called 'Securing a healthy natural environment' and 'An introductory guide to valuing ecosystem services' consolidated this new approach, and it was given added impetus by the new Public Service Agreement 28 that imposes a duty on DEFRA to 'secure a diverse, healthy and resilient natural environment' on behalf of Government.

The idea of ecosystem services originated in the Millennium Ecosystem Assessment that was launched by the United Nations in 2001 to assess the consequences of ecosystem change for human well-being. It identified four categories of ecosystem services:

- Provisioning services (e.g. water, food, fuel and genetic resources)
- Regulating services (e.g. flood alleviation and Carbon sequestration)
- Cultural services (e.g. heritage and recreation)
- Supporting services (e.g. soil formation and nutrient cycling)

The AONB's landscape is a major provider of ecosystem services to the communities that surround the designated area and more widely across the region. The supply of drinking water from the AONB's reservoirs, and of high quality food produced by its farmers are two obvious examples, but it is easier to overlook the strategically important role of the AONB's moorlands that both hold back flood water and act as a huge Carbon storage mechanism. And the AONB has a wealth of cultural features and it provides endless opportunities for active outdoor recreation that help us to meet healthy living objectives.

The AONB's Joint Advisory Committee

The Committee oversees the work of the AONB team, which is funded by Natural England with support from local authorities including North Yorkshire County and Harrogate Borough Councils. It met three times between April 2008 and March 2009:

Annual General Meeting, 17th July 2008, West End Outdoor Centre, Thruscross

Members re-elected North Yorkshire County Councillor Heather Garnett as Chair, and Harrogate Borough Councillor Nigel Simms was elected as Vice Chair. It was agreed that Chris Hawkesworth of Pateley Bridge Town Council and Tom Wheelwright of the Moorland Association would serve on the Committee's Executive alongside the Chair and Vice Chair.

Colin Speakman of the Dales and Bowland Community Interest Company gave a presentation on the Company's public transport networks, following a debate on North Yorkshire's Sustainable Community Strategy. Members visited Scaife Hall Farm and the Washburn Project in the afternoon.

Thursday 23rd October 2008, Grantley Village Hall

The meeting considered the final report from the Business Plan Working Party and approved the revised Constitution, before receiving a report on progress with preparation of a new 2009 - 2014 Management Plan for the AONB. Jeff Pacey, Ouse Catchment Manager for the Environment Agency, and Marian Wilby introduced Members to the Ripon Multi Objective Project and Rachel Earnshaw of BTCV described the AONB's work on the Source to City Project.

Thursday 5th February 2009

An extraordinary meeting of the Committee was held in February to approve revisions to the Consultation Draft of the 2009 - 2014 Management Plan.

AONB Team

In 2008/09, the Team comprised:

Paul Burgess	AONB Officer (5 days per week)
Sarah Kettlewell	Assistant AONB Officer (3 days per week)
Rachel Earnshaw	Education Officer (contract post with BTCV - 2½ days per month)
Leanne Fox ² /Mary Jones/ Samantha Parker	Administrator (job share - 5 days per week)
Janina Holubecki ¹	AONB Information Officer
Pippa Pemberton	AONB Historic Environment project Officer (English Heritage secondment - 2 days per week)
Barry Slaymaker	AONB Ranger and AONB Friends Co-coordinator (4 days per week)
Colin Slator	AONB Ranger (2 days per week)
Marian Wilby	Farm Conservation Adviser (contract post with North Yorkshire FWAG - 5 days per week)

¹ Janina Holubecki left in July 2008. Leanne Fox became the AONB's Information Officer in January 2009.

² Samantha Parker joined the Officer Team as Administrator in January 2009. Her four days per week post is a job share with Mary Jones.





PART 2 - Performance

POLICY

Planning Applications

The local planning authorities consult the JAC about large-scale residential or commercial development, waste disposal, minerals and telecommunications applications, and about major highway schemes. The JAC can also request details of development proposals that fall outside these categories but may have an impact on the AONB nonetheless. Responsibility for the JAC's response to planning matters is delegated to the AONB Officer in consultation with the Executive. Involvement with the development control process was limited in 2008/9 because of priority given to Management Plan review.

Harrogate District Strategic Partnership

The AONB JAC has a seat on the Harrogate District Strategic Partnership Executive group. The JAC's delegate attended 5 meetings during 2008/9. The AONB Officer represented the JAC at the Partnership's annual meeting in July, and at the North Yorkshire Strategic Partnership annual conference in September.

Rural Practitioners Group

The AONB is represented in a regional forum of senior staff working for organisations that form part of the DEFRA network. Convened by the Government Office's Rural Directorate, in 2007/08 it included representatives of the Regional Development Agency, Forestry Commission, Natural England, Countryside Agency, Environment Agency, National Parks and Third Sector bodies such as the Yorkshire Rural Community Council. The Group met 5 times in 2008/09.

Yorkshire & Humber Rural Affairs Forum

The Forum is a coalition of rural stakeholders from across the region whose aim to represent the views and concerns of the rural 'customer', i.e. people affected by policies and services in rural areas. The Forum provides feedback to authorities and organisations responsible for policy and service delivery and acts as a sounding board for new ideas. The AONB Chair is a Member of the Forum's Secretariat that met regularly throughout the year. Further information is available from the Forum's website: <http://www.yhraf.org.uk/steering-group-meetings.shtm>

National Association for AONBs & the Northern Group of AONBs

Nidderdale AONB was represented at the September meeting of the Northern Group of AONBs at the Arnsdale & Silverdale AONB.

PEOPLE & PARTNERSHIPS

Yorkshire Dales Leader

Leader is a European Union fund that provides grants to help regeneration in rural areas suffering from social and economic disadvantage. The AONB Officer is part of the Yorkshire Dales Leader Officer Team that submitted a successful bid to Yorkshire Forward in July. A Local Action Group was formed in November, and four Members of the JAC were nominated to serve on the Leader Management Group.

Yorkshire Peat Project

The aim of this project is to co-ordinate work to restore degraded peatland and blanket bog by landowners and conservation bodies across the region. The partnership is convened by the Yorkshire Wildlife Trust, and includes representatives from Moors for the Future, the Yorkshire Dales and North York Moors National Parks, Pennine Prospects, National Trust, Yorkshire Water, Natural England and the Environment Agency. During 2008/9, the partnership commissioned the Dales National Park and the Trust to carry out research into the quality and extent of peat deposits in the region, and to develop a business plan for the project.

Friends of Nidderdale AONB

Two new Directors/Trustees appointed in April 2008 to strengthen Friends governing body - there are now 9 voluntary Trustees of the charity. Funds administered by the Friends were used to support AONB Young Rangers, and The Low Dam conservation project partnership in the Washburn Valley that involved the AONB, Yorkshire Water, Wharfedale Naturalists and Craven College.



Two editions of Friends newsletters were distributed to the membership that exceeded 560 in spring 2008. The Friends organised a programme of events for members with an average attendance of 50. The Annual Meeting in 2008 was addressed by Roger Clarke, Board member of Natural England with national responsibility for AONBs.

Young Rangers

The AONB Young Rangers group encourages children aged between 7 and 13 to become involved in the AONB and discover its heritage. It was launched in early 2004; sessions are developed and supervised by BTCV on behalf of the AONB, where it has quickly become established in the AONB and still continues to grow. The group met 20 times during 2008/9 involving more than 100 children.



AONB Website

The AONB's website was updated on a regular basis throughout the year. These updates included the posting of "what's new" items, news & events items, and seasonal images on the home page, alongside reports and information about the AONB's work. A major review of the website, which is still ongoing, was started in February.

Newsletters, Publications and Events

Two editions of the AONB's newsletter for residents were produced in autumn 2008 and spring 2009. They were delivered direct to

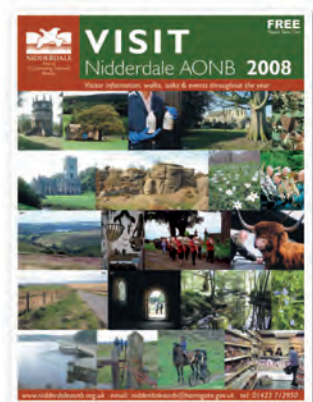
almost 14,000 homes in the AONB by Royal Mail. The newsletters contained articles on the new Uplands Entry Level Scheme for hill farmers, and details of the award by Europarc in 2008 of Sustainable Tourism Charter status for the AONB and the Dales National Park.



Coverage also included volunteering in the AONB, the AONB Heritage Strategy, the Sustainable Uplands Project, microgeneration and the AONB - plus updates on several grants available to AONB landowners and residents to enable them to participate in conserving and enhancing the AONB.

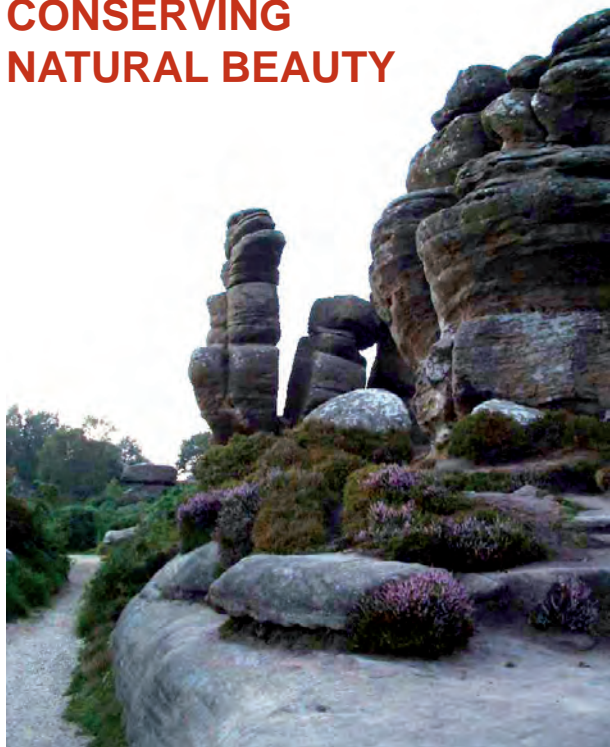
30,000 copies of a 16-page tabloid style summer newsletter for visitors were printed in May and distributed to hotels,

bed and breakfasts, campsites, visitor attractions, shops, pubs and tourist information centres. The newsletter contained information about places to visit, walks and AONB events and encouraged sustainable tourism.



The AONB ran a programme of summer events between June and September aimed at visitors to the AONB. The activities were led by local volunteers on behalf of the AONB.

CONSERVING NATURAL BEAUTY



Sustainable Development Fund

The Nidderdale AONB had a budget of £61,666 to support sustainable development projects in the AONB in 2008/2009 financial year.

In accordance with the terms of Natural England's grant offer, ten percent was used for administration. This sum was used to expand promotion of the Fund, to provide advice to applicants, and to develop sustainable development projects. The Trustees of the Yorkshire Dales Millennium Trust continued to act as project approval body in 2007/08.

The following projects were supported in 2008/09 financial year:

Project: AONB Parish Caretakers

Awarded: £8,751.75

The project provides Parish Council's with funding to appoint and retain Caretakers whose duties include maintaining village environments, play areas, roadside verges and public rights of way.

Project: 6 Dales Trail

Awarded: £10,200

The Walkers are Welcome Committee based in Otley just outside the AONB's southern boundary, were awarded a grant to develop a medium distance walking route into the AONB from Otley to Middleham in lower Wensleydale. The route is linked to public transport and shorter walks from the main route have also been devised.

Project: Nidderdale Llamas

Awarded: £3,825

This SDF grant was used by a local farmer to set up a Llama trekking business providing guided walks and other events.

Project: Experience Hackfall

Awarded: £15,000 (over two years)

Owned by the Woodland Trust, Hackfall Wood is a Grade 1 listed and on the Register of Historic Parks and Gardens. A significant HLF grant has been secured to improve access and interpretation on the site. An SDF grant has been awarded to develop school visits and educational materials as well as creating a volunteer group, training and equipment.

Project: Nidderdale Bus

The Dales & Bowland Community Interest Company won North Yorkshire's summer leisure bus contract in 2008. The SDF grant was used to support AONB-based services on key recreational routes from Spring to September.

Project: Source to City

This project is being administered by BTCV on contract to the AONB. Work during 2008/9 included recording of oral histories and development of the project website that will be launched in 2010.



Built Environment Initiative

Harrogate Borough Council administers a grant scheme aimed at conservation of historic buildings and structures of conservation importance in the AONB. A substantial grant was awarded to support the repair and consolidation of Providence Smelt Mill, a scheduled ancient monument near Greenhow that had been on English Heritage Buildings at Risk register for several

years. Other work supported by the scheme included repairs to the village hall in Middlesmoor and a former sawmill in Colsterdale.

Greenhow Landscape & Biodiversity Enhancement Fund

In 2005, Hanson was awarded planning consent by North Yorkshire County Council to extend the earth mound that screens the quarry workings from surrounding views. As a condition of planning consent, Hanson were obliged to set up an environment fund to mitigate the impact of the extension on the surrounding landscape, which is part of the AONB.

The Fund is worth £130,000 in total until the end of the quarry's life in 2027. The Fund is being administered by the AONB on behalf of Trustees drawn from the Nidderdale AONB Joint Advisory Committee, North Yorkshire County Council, Harrogate Borough Council, and Hanson together with representatives of Thornthwaite, Thruscross and Bewerley Parish Councils.

Awards totalling more than £4,059.59 were made by the Trustees from the 2008 budget to projects including a contribution to improve management of the Greenhow Local History Club's archive, and to projects involving dry stone wall repair.



Parish Caretakers

Parish Caretakers have been employed by Parishes with financial and other support from the AONB since 2004. Their role is to improve the rural environment by managing roadside verges, public open spaces and rights of way.

11 Caretakers were funded in 2008/2009 using grant aid totalling £8,751.75. The Parishes involved provided a match of at least 20% of the funds giving a total project value in excess of £20,000. They are Bewerley, Dacre, Grantley, Grewelthorpe, Hartwith, Lower Washburn, Masham, Menwith/Darley, Pateley Bridge, Thruscross and Upper Nidderdale.



Farm Advice

5,169 hectares of land was entered into Entry Level Stewardship during 2008/9 resulting in grants for AONB farmers worth £75,450. 10 HLS agreements were facilitated by the AONB Farm Conservation Officer on land designated as SSSI in partnership with Natural England. Partnership arrangements between Natural England, the Yorkshire Dales National Park and the AONB were identified as a best-practice model by Natural England. 124 farm visits were carried out during the year.

Ripon Multi Objective Project – Phase Two

The AONB's work with farmers and landowners in the river Skell and Laver catchments in partnership with the Environment Agency, Forestry Commission, National Trust, the Dales Rivers Trust and Natural England continued in 2008/09. The Environment Agency commissioned Halcrow to produce a report into the future of the Project that was presented to a stakeholder seminar at Fountains Abbey in January 2009. The outcome was a commitment to continue the work for a further three years, and the Agency committed £75,000 to the AONB to enable the Phase Three to go ahead.

Nidderdale Catchment Sensitive Farming Project

In February, the AONB agreed to lead a project involving the Yorkshire Dales Rivers Trust and Yorkshire Water that was developed under the Strategic Partnership Opportunity strand of the England Catchment Sensitive Farming Delivery Initiative. The work will focus on reducing diffuse water pollution associated with agriculture and the management of heather moorland for grouse in Upper Nidderdale. The project is worth £55,000 to 2011, and funding will be used to target key pollutants, which include colour caused by run-off from moorland peat, sediment and nitrogen, identified in a catchment appraisal produced for the partnership by Leeds University working on contract to Yorkshire Water.



New native woodlands

In 2007/8, the Yorkshire Dales Millennium Trust secured £150,000 of SITA Trust funding for new native woodland in the AONB. 15 hectares was planted by spring 2009, but publicity and promotion of the scheme during early 2009 generated applications covering a further 25 hectares.

SINCs

Sites of Importance for Nature Conservation (SINCs) are designated by local authorities in recognition of their sub-regional importance for biodiversity. They

are non-statutory: conservation of the habitats they contain, and the species that depend on them, is due to sympathetic management by individual landowners. The objectives of the AONB SINC project is to ensure that landowners are aware of the value of land designated as SINC, to produce monitoring reports on SINC condition and simple management plans that will be used to agree appropriate management with owners and, where appropriate, to support applications for Environmental Stewardship grants.

Waders

Survey work during the late 1990s showed that the AONB supports regionally-significant populations of wading birds such as lapwing and golden plover (on RSPB's Red List of Birds of Conservation Concern) plus oyster catcher, curlew and snipe (all on RSPB's Amber List). Conservation of the mainly farmland habitats chosen as breeding sites by these birds is a high priority for the AONB and Government bodies like Natural England. The annual survey of a specially selected land parcels by volunteers in the AONB is helping to strengthen Natural England's partnership with farmers landowners.

Nidderdale Countryside Volunteers

Nidderdale Countryside Volunteers meet fortnightly, and numbers expanded in 2008/9 to an average of 18 people per task. Work in 2008/9 included tree planting at Greenhow, and creation of a wildlife area for pupils at Kell Bank Primary School near Masham.

Nidderdale Dry Stone Walling Group

The Walling Group has been meeting weekly with an average attendance of 4 or 5 volunteers. The main projects completed during 2008/9 was a re-built stretch of wall, including a new stone seating area, near Low Dam in the Washburn Valley. The volunteers also worked at Hackfall for the Woodland Trust.



Expenditure (£)		Income (£)	
Salaries (including National Insurance, Superannuation, Overtime, Travel and Training)	142334	Natural England	215203
Accommodation and Office Costs	23710		
Partnership budget for promotion (PR) & Events	16961	North Yorkshire County Council	20040
Partnership Running Costs	2035		
Farm Conservation Project	38444	Environment Agency	8750
Sustainable Development Fund	55950		
Historical Environmental Officer	15474	English Heritage	10000
		Hanson	2000
Parish Caretakers	6332	YDMT	6332
AONB Enhancement Scheme	20000		
RHA Tourism Study	8100		
Yorkshire Forward	8100		
YD Farm Report	13300	YDNP	5000
Summer Events	1148		
Young Rangers	1084		
Ripon MOP	1473	Misc Income Inc Events income	2655
DDS Management/Admin	28211	Harrogate Borough Council	96476
TOTAL	374556	TOTAL	374556

AONB FACTS & FIGURES

- The AONB covers 603 km² of land in the foothills of the Pennines in North Yorkshire.
 - Nidderdale AONB shares its western boundary with the Yorkshire Dales National Park.
 - 95% of the AONB falls within Harrogate District with a smaller share in Richmondshire and Hambleton Districts. The AONB is wholly within the County of North Yorkshire.
 - The AONB is administered by Harrogate Borough Council in conjunction with North Yorkshire. It is overseen by a Joint Advisory Committee (JAC) that in 2008/09 had 24 members from 15 organisations representing local authorities, parishes, landowning bodies, community groups, business interests and government agencies.
 - There were 5 FTE (full time equivalent) members of the AONB Team in 2008/09. The team is based in Pateley Bridge, the largest town in the AONB.
 - 20,534 hectares (34%) of the AONB is moorland dominated by heather.
 - There are 5,946 hectares of upland heath and blanket bog.
 - 16,612 hectares of the AONB's moorlands are of international importance, and designated as a Special Protection Area and Special Area of Conservation.
 - The Fountains Abbey World Heritage Site is situated in the AONB.
 - There are 14 Conservation Areas, 126 Scheduled Ancient Monuments and 545 Listed Buildings in the AONB.
 - 1,355 people were employed on 404 farms covering 82% of the AONB in 2007.
 - There were 634,842 sheep in the AONB in 2007.
 - 7% of the AONB is woodland including 1,200 hectares of Ancient Woodland, 2,450 is planted conifer woodland and 1,400 is broadleaved.
 - The population of the AONB is 15,671. 68% is in employment, 12% is aged between 16 - 29 and 15% is retired.
 - 20% of the households in Pateley Bridge do not have access to private transport; there has been a 13% increase in traffic flow on 'C' roads in the AONB since 2001.
 - 30% of towns and villages have access to a bus service providing 4 journeys per day.
 - There are 820 kms of public rights of way in the AONB.
 - An estimated 35% of the AONB is accessible to walkers in accordance with provisions contained in the Countryside & Rights of Way Act 2000.
-