



# Worksheet



## Pond dipping fact file

Use the nets to catch some pond creatures and empty them into a tray.  
Use the key to identify them and fill out the fact file and questions below.

A. Creature name .....

Group .....

Where in the pond was the creature found?

very edge     weeds     in open water

Drawing of creature

B. Creature name .....

Group .....

Where in the pond was the creature found?

very edge     weeds     in open water

Drawing of creature

C. Creature name .....

Group .....

Where in the pond was the creature found?

very edge     weeds     in open water

Drawing of creature

- Which is the most unusual looking creature? A. B. or C.
- What features does it have to help it live in a pond? .....

3. Choose two of the creatures you have found. List two things they have in common and 2 ways in which they differ.

Common things

Differences

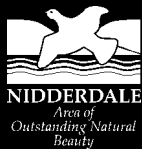
.....

.....

.....

.....

WHEN YOU HAVE FINISHED LOOKING AT THEM, PUT THE CREATURES BACK CAREFULLY WHERE YOU FOUND THEM IN THE POND.



# Worksheet



## Pondlife Study

Use the nets to catch some pond creatures and empty them into a tray. Choose two different animals, use the key to identify them. Draw a diagram for each and annotate the different parts, then answer the questions.

### A.

Creature name .....

Major Taxonomic Group .....

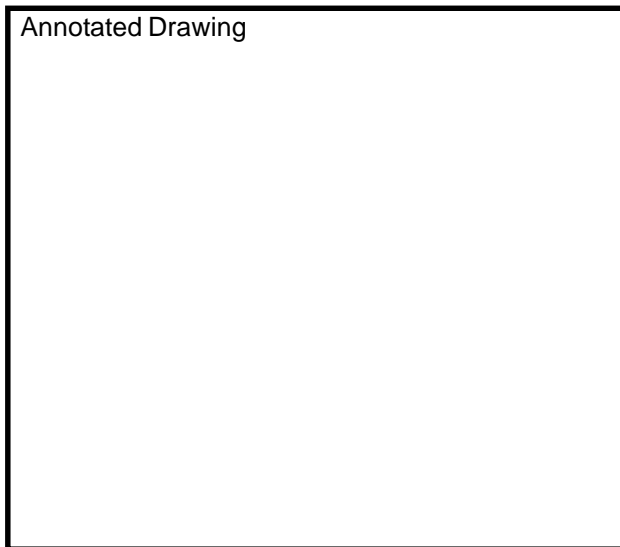
Key features (as shown on diagram)

.....  
.....  
.....

What do you think these features are used for?

.....  
.....

Annotated Drawing



### B.

Creature name .....

Major Taxonomic Group .....

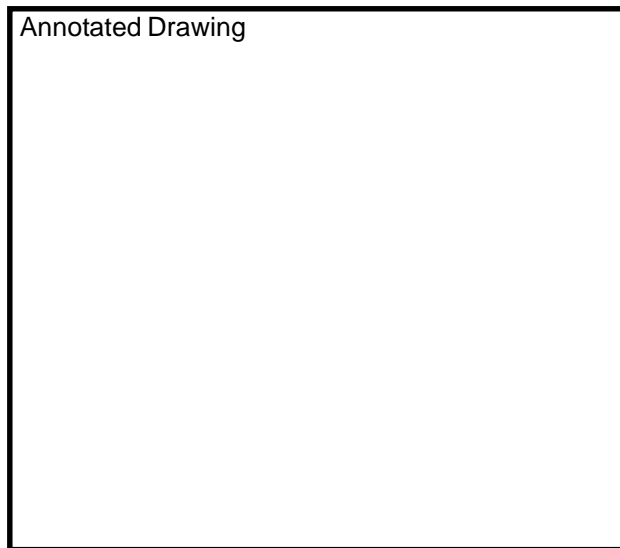
Key features (as shown on diagram)

.....  
.....  
.....

What do you think these features are used for?

.....  
.....

Annotated Drawing



1. How do the features of one of the animals enable it to live in its habitat? .....

.....  
.....

2. Name one adaptation (special feature) that enables this creature to survive seasonal changes.

.....

3. How do you think this animal's behaviour changes to survive the seasons? .....

.....

**When you have finished looking at them, put the creatures back carefully where you found them.**